

PER MONTH

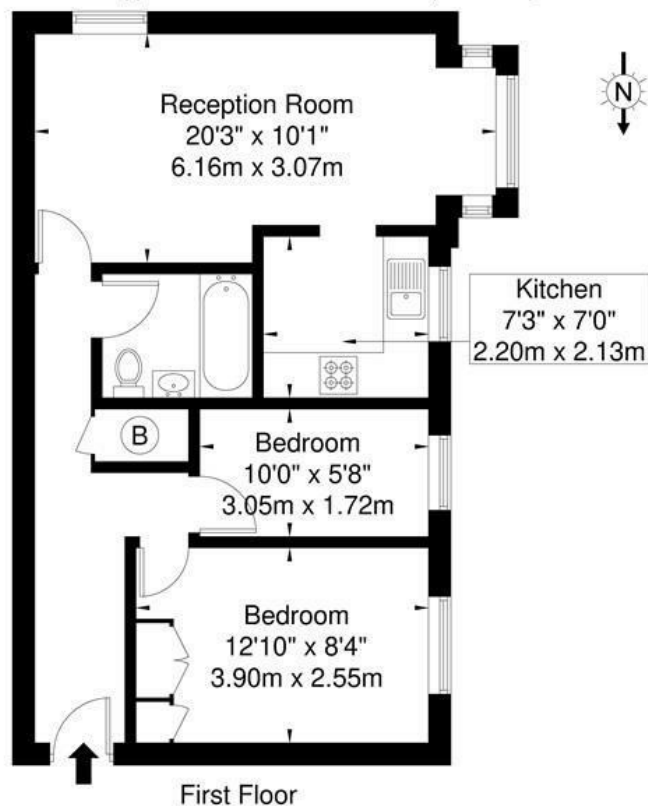
**£1,860 Per Month**

**Acton Lane**

Chiswick, W4 5DL

## Acton Lane, W4 5DL

Approx. Gross Internal Area = 51.2 sq m / 551 sq ft



Ref

Copyright **BLEUPLAN**

The Floor plan is not to scale and measurements and areas shown are approximate and therefore should be used for illustrative purposes only. The plan has been prepared in accordance with the RICS code of Measuring Practice and whilst we have confidence in the information produced it must not be relied on. If there is any aspect of particular importance, you should carry out or commission your own inspection of the property.  
Copyright © BLEUPLAN

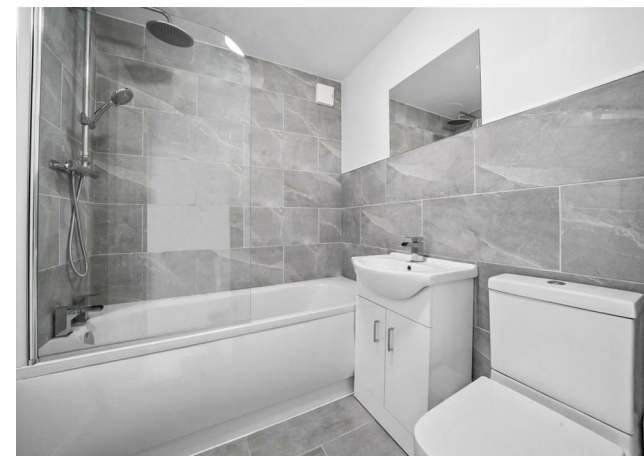
2



1



1



### Energy Efficiency Rating

	Current	Potential
Very energy efficient - lower running costs		
(92 plus) <b>A</b>		
(81-91) <b>B</b>		
(69-80) <b>C</b>		
(55-68) <b>D</b>		
(39-54) <b>E</b>		
(21-38) <b>F</b>		
(1-20) <b>G</b>		
Not energy efficient - higher running costs		
<b>England &amp; Wales</b>	74	81
	EU Directive 2002/91/EC	

Agents Note: Whilst every care has been taken to prepare these particulars, they are for guidance purposes only. All measurements are approximate and are for general guidance purposes only and whilst every care has been taken to ensure their accuracy, they should not be relied upon and potential buyers/tenants are advised to recheck the measurements

### OFFICE ADDRESS

The Clock House  
66 South Parade  
Chiswick  
London

### OFFICE DETAILS

020 8995 1600  
lettings@andrewnunnassociates.co.uk  
andrewnunnassociates.co.uk